

SetEditTonbury for Tonbury, AnySat, Palcom, Wisi and Preisner

Contents:

1. General
2. Installation
3. Step by step
 - a. Load a settings file
 - b. Put a setting in order
 - c. Provider
 - d. Favourite lists
 - e. Channel parameters
 - f. Write settings into the receiver
 - g. Print settings
 - h. Using the transponder functions and entering new channels by hand
 - i. Import of channels, other settings and how to convert a settings file
4. Program use and personal configuration
5. Functions
 - a. File functions
 - b. Configuration
 - c. Channel functions
 - d. Provider functions
 - e. Satellite functions
 - f. Transponder functions
 - g. Favourite lists
6. Problems
7. Register
8. Glossary and abbreviations

1. General

SetEditTonbury is a program to change the settings (program sequence, names of channels etc.) of the Tonbury, AnySat, Palcom, Wisi and Preisner digital satellite receivers.

You can easily make your own channel lists, edit them, print them and write them into your receiver. You can enter new channels, providers or transponders, edit, delete and save them, change the names of channels, sort, search, copy and paste channels.

With SetEdit you can edit settings of different receivers, exchange channels between settings files of different receivers or convert a settings file of one format into another (e.g. SetEditDVB2000 into SetEditTonbury). If you have other receivers you can add new "modules".

The settings are read from the receiver and written into the receiver via the RS232 interface with a null modem cable.

With this program you can't change the receiver firmware; to do this, please use the tools you can find on the Tonbury homepage.

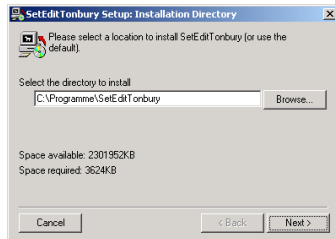
In the following guide you will find a step by step description of how to use this program. In the other chapters there is a short description of all functions divided in file, configuration, channel, provider, transponder and favourite list functions.

2. Installation

System requirements:

PC with Windows 95/98/ME/NT/2000/XP, one free serial port, 20 MB of free disk space and a Pentium with more than 100 MHz are recommended.

To install SetEditTonbury you just have to start the file SetEditTonbury_installation.exe and enter the name of the directory where you want SetEditTonbury to be installed.



In the destination directory folder you will find the executable program, some pictures and an example settings file.

If you already have a SetEdit version and simply want to add SetEditTonbury, please copy the file "SetEditTonbury.dll" in the SetEdit directory you already have.

There are no changes made to the Windows system files.

In your SetEdit directory, you will now find the DLLs which are the modules for the different receiver types.

You will also find the file SetEditTonbury.ini in this directory. Your personal configuration is saved in this file.

If you would like to uninstall SetEdit you can just delete all these files.

If you have more than one receiver (with the right DLL modules), you can decide with which type of SetEdit the program should start. You just have to change the name of the exe file.

Example: If you start SetEditTonbury.exe after the installation of SetEditTonbury_installation.exe the program will start as an Tonbury editor. If you change the name of the SetEditTonbury.exe file into SetEditDVB2000.exe, the program will start as DVB2000 editor. Of course you can open one or more Tonbury editors additionally.

3. Step by step

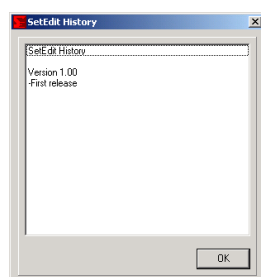
I assume that the program has been installed on your PC as described in chapter 2, also that you are using SetEditTonbury for the first time.

In the following I will describe how to make a backup of your receiver settings (chapter 3.a.), how to get the settings from the receiver into your PC and back (chapter 3.a. and 3.f.). By means of examples you will see how to get order in your settings (chapter 3.b.), how to use the provider functions (chapter 3.c.), how to put channels into favourite lists (chapter 3.d.), how to work with the transponder menu (chapter 3.h.), how to enter new channels by hand (chapter 3.h.), how to adjust settings from other sources (e.g. from the Internet) to your requirements (chapter 3.i.), how to handle the peculiarities of German Premiere World channels (Formula-1, soccer, pay-per-view) (chapter 3.h.) and how to convert one settings format into another (chapter 3.i.).

3.a. Load a settings file

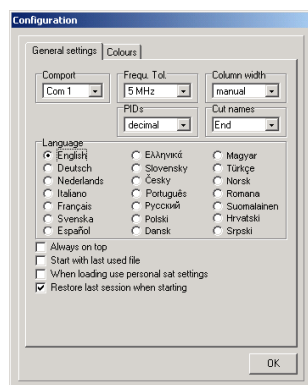
Please connect your receiver to the PC with a serial null modem cable.

If you start SetEditTonbury for the very first time you will get a window where the history of the changes from previous versions is shown.



The first thing you should do is to make a backup of the channel settings in your receiver. You can restore such a backup at any time into your receiver and the receiver will be the same as it was at the time you made the backup.

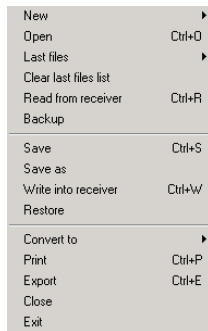
To make a backup you first have to tell SetEditTonbury, which comport on your PC is being used to connect to your receiver. To do this please click on the button "Config.", then you will get the following dialogue:



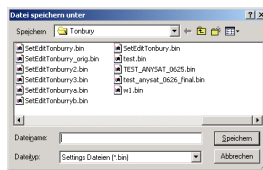
(Here you find two pages. If you are on the page "Colours", please click on "General settings" to get the menu shown above.)

Please enter in the box "Comport" the comport you are using to connect your receiver to the PC and click on "OK".

Now click on the button "file". You will get the following menu:

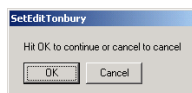


Here you select the function "Backup", then you get the following window:



In this window you enter a filename for your backup and the location, where you want this file to be saved. *(Note: the language of this window depends on your windows version, so don't worry if you see German buttons here)*

As soon as you have clicked on "save", the following message will appear:



As soon as you click on OK in this message, the settings will be read from the receiver and saved to your hard disc.

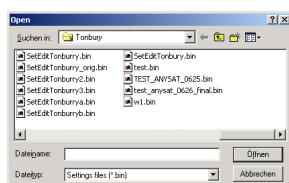
If you make some unintentional changes in your settings when you experiment with SetEditTonbury you can always restore this backup file into your receiver and reverse any changes.

Now we have to find out whether you want to change your own receiver settings with this program or if you want to adapt a settings file which you found on the Internet to your own requirements and write it into your receiver (chapter 3.i.).

If you want to change your own receiver settings please click on the button "file" and select the entry "Read from receiver" from the drop-down menu. You get the same message as for the "backup", so continue as described above.

The settings are now transferred from the receiver to the PC, but this time the settings are not saved, but shown in SetEditTonbury.

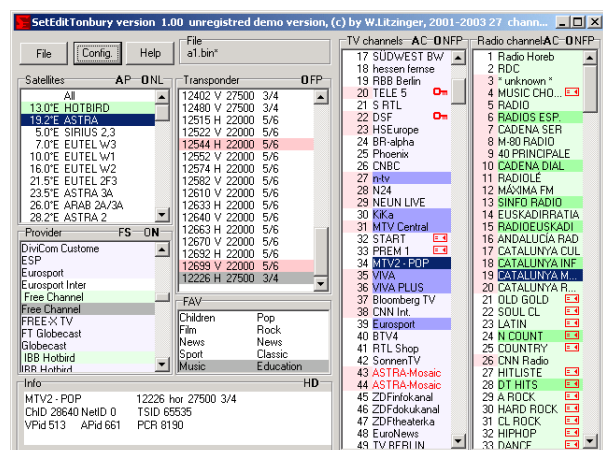
If you want to adapt settings which you found in the Internet to your own requirements and then write them into your receiver, you have to load these settings first. Please click on the button "File", then select the function "open" from the drop-down menu and choose the file you want to load from the list you get.



Then you click on open or double click on the file you want to load.

Note: If you want to write settings into your receiver, which you found e.g. in the Internet, you have to be careful. A settings file does not only contain the channel information, it also includes satellite configuration. These configuration settings usually will not be the right ones for your receiver. Therefore you should better overwrite these configuration settings with your own configuration settings (see chapter 3.i. or 5.e.).

When you have loaded a settings file or read the settings from your receiver, you get the following window (depending on the window size and some personal settings the picture may differ).



You see the TV channels (light blue background) and the radio channels (light green background), a satellite list, a transponder list, a favourite list (FAV) and a provider list.

If you select a satellite in the satellite list, you will see all channels and all transponders, which are assigned to this satellite.

If you select a transponder, provider or a favourite list, you will only see the channels, which are assigned to this transponder, provider or favourite list.

When you select a channel, the satellite, transponder, provider and FAV (if the channel is in a FAV list) are marked grey.

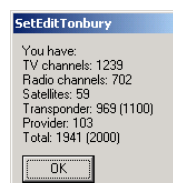
Channels, which are in a FAV list, are shown in the channel list with a darker background colour.

If the channel number is marked with a red background colour, the channel is assigned to a vertical or right hand circular polarised transponder. If the channel number has a white background colour, the channel is assigned to a horizontal or left hand circular polarised transponder.

Satellites with green background colour are "active" (programmed), i.e. there are channels on these satellites.

(You can change all these marking colours in the configuration menu, see chapter 5.b.).

When you click with the right mouse button in the channel list (TV or radio) and select from the popup menu the entry "Information" you will get the number of TV channels, radio channels and transponders that are in your settings.



3.b. Put a setting in order

Now you have the settings (from your own receiver or from a file) in SetEditTonbury. The most important functions will now be explained in detail with some examples, while in the chapter Functions all functions are briefly described.

The most important function of SetEditTonbury is to get order in your program list. This can be by deleting channels you don't need (e.g. channels that are scrambled for which you don't have a subscription), getting the channels into a useful order, assigning the channels to FAV lists or providers of your choice and correcting wrong channel settings (e.g. wrong channel names).

First let us suppose that we want to delete a channel. To do this we have to select the channel first. Please click with the mouse on the channel, which you want to delete in the channel list. The satellite, transponder, provider and FAV list (if this channel is in a FAV list) of this channel are then marked grey.

Note: Sometimes it is useful to change the colour used to mark the satellite, transponder, provider and FAV list (similarly with the colour in which for example empty transponders or duplicate channels are shown), e.g. because the colours are too pale on a laptop. You will find how to do this described in chapter 5.b..

Now click with the right mouse button in the channel list and you will get the following popup menu:

Info	Alt+I
Show	
View sorted by	
Change data	Return
Delete	Del
Copy	Ctrl+C
Paste	Ctrl+V
Move to	Ctrl+M
Select	
Invert selection	Ctrl+I
Mark as	
Mark new channels in	
Mark not existing channels in	
Remove not existing channel markings	
Sort	
DISNEY CHANNEL -> Disney Channel	Alt+Y
Find channels	Ctrl+F
Find duplicates	Ctrl+D
New	Ctrl+N
Split	Ctrl+T
Setup column width	

In this menu, please select the "delete" function and the selected channel will be deleted from your settings.

Note: There is no undo function yet, so be careful.

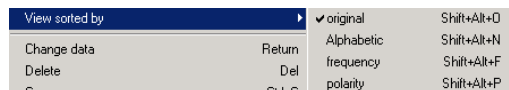
You can also delete a channel by selecting the channel and then hitting the Delete key on your keyboard.

To delete more than one channel please click for example on channel 5, hold the shift key down and then click on channel 7 so that channels 5 to 7 are selected. Now you can delete these selected channels as described above.

To select channels that are not consecutive (e.g. channels 5, 20 and 39) please click on the first channel (here channel 5), then hold down the Ctrl key on your keyboard, keep this key pressed and then click on the channels 20 and 39.

Now assume we want to move a channel, e.g. ZDF to position 2.

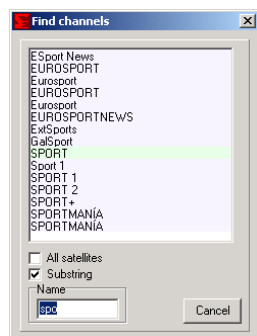
Note: You can show your channel lists in original order or sorted by alphabet, frequency or polarity. If you want to move channels it is easier, if the channel list is shown in its original order. If the channel list is shown in alphabetical order and you move a channel, only the channel number will change not the position of the channel in the channel list (the name is still the same). To show the channel list in original order, please click with the right mouse button into the channel list and select in the menu that appears under "View sorted by" the option "Original".



You can also change the viewing mode of the channel lists, if you click on the letters "O" (original), "N" (Name), "F" (frequency) or "P" (polarity) in the border of the channel lists.

Now we have to find out where the channel ZDF is at the moment. To find all channels you first have to click on the satellite "all" to see really all channels, independent of the satellite the channels belong to. Then you can search for ZDF by entering the first letters of the channel name. Please click anywhere in the channel list and hit the „Z“ key on your keyboard, now all channels whose name begins with Z are selected. Now hit the D key on your keyboard. Now all channels beginning with ZD are selected. You can do this of course with the third, fourth letter etc. If you wait for more than three seconds between two letters a new search starts, so that the last letter entered is taken as the first letter of the name to be found.

You can also use the "find channels" function to find channels by name. Open the channel menu and select the function "find channels" from this menu. You will get this window.



You can choose whether you want to search on all satellites or only on a actually selected satellite. Click on the field beneath "all satellites" to search on all satellites (if you have selected "all" in the satellite list you won't see this option because all satellites are searched anyway).

If you now enter "ZDF" in the field "name" you will see in the list above it all channels whose name begins with "zdf", e.g. the channel ZDFtheaterkanal.

If you click on the white square to the left of the text "substring" you will see all channels that include entered letters as a part of the channel name (beginning, middle or end, upper/lowercase is ignored). If you enter for example the word "sport" the channel "Eurosport" is found too.

Now you can move channels from this list to another position in the channel list or assign them to another transponder, provider or a FAV list. The channels will not be removed from the find list, but when you click on such a channel you will see that the new transponder or the new favourite list is then marked in grey.

Within this find function you can also delete channels. Simply select the channel in the list of the find function and hit the Delete key on your keyboard.

Now you have found all channels with a name beginning with ZDF, please select the one you want to move. There are several ways to move the channel.

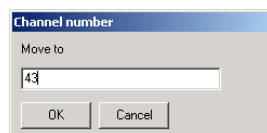
The first way is to move the channel by drag & drop: click on the channel you want to move, keep the mouse button pressed and drag the channel to the position where you would like to have it. The channel will be placed before the position the mouse is on. To drag a channel on the last position in the list, you have to drag it beyond the last channel.

When you reach the end of the list, the list scrolls automatically.

You can also move the channels with the arrow keys of your keyboard. Please select the channel(s) you want to move, then press the Ctrl-key on your keyboard and keep this key pressed. Now you can move the selected channel(s) with the arrow keys on your keyboard. If you press the key Home or End while the Ctrl key is pressed you move the selected channel(s) to the beginning or the end of the list.

With both the above methods you can of course move more than one channel.

Another possibility is to move a channel directly to a channel number (e.g. channel 20 to position 5). Please select the channel, then click with the right mouse button in the channel list, in the menu you now get, select the function „Move to“, then you get the following dialogue:



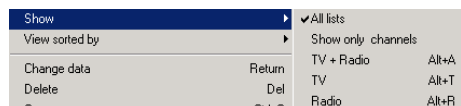
Here you can enter the channel number on which you want to move the selected channel (in this example 5).

The selected channel will now be moved in front of the channel that was previously at this position. If the channel you move had a higher channel number before it will be moved to channel 5. If the channel had a lower channel number before (e.g. 3) the channel will be moved before the channel that was at position 5. Because one channel is now missing in the list (the channel you are moving) all channels are moved up one position (i.e. to lower numbers), so in this case your channel will be moved to position 4.

If for example we have the channels "one" "two" "three" "four" "five" "six" "seven", then when you move channel 6 to position 3 we get the result "one" "two" "six" "three" "four" "five" "seven", but when you move channel 3 to position 6 you get the result "one" "two" "four" "five" "three" "six" "seven".

Especially if you use the drag & drop method it is often a problem that not all channels can be seen on the screen, so you have to scroll. If you want to move a channel from position 500 to 10 you have to keep the mouse button pressed while you move to position 10. If you move the mouse some pixels up and down at the left border of the list, then the list will scroll in this direction.

There are some functions that make moving channels more comfortable. For example you can hide one of the lists (TV or radio) so as to have more room for the channels. Please call the channel menu and select on „Show“ the channels you want to see (TV, radio or both). If you click on "Show only channels", the satellites, transponders and FAV-lists are hidden. With "All lists" all lists will be shown again.



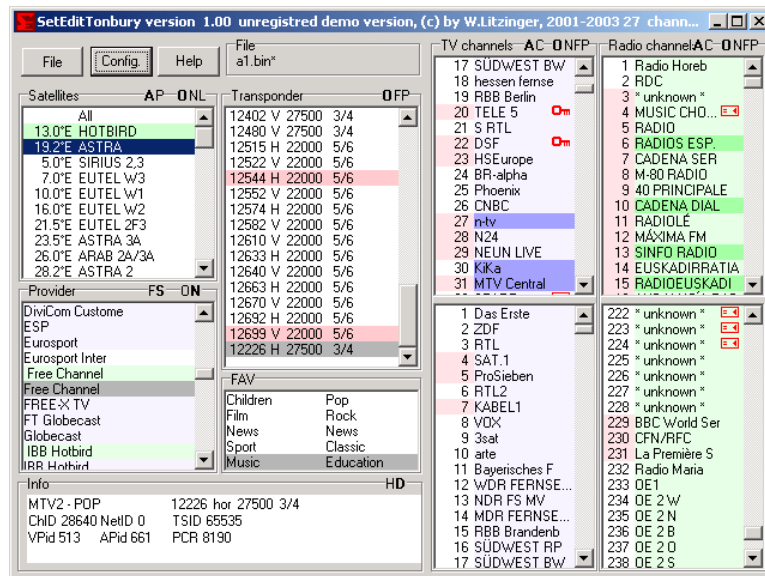
If you double click on the name of a list (TV channels or radio channels) the other list will be hidden.



With a second double click on the name you will see both lists again.

When you click on the letter "C" in the border of the channel lists, the satellite, transponder, provider and favourite lists are hidden. When you click on the letter "A", you will see all lists again.

Another function that makes moving by drag & drop easier is the "split" function. Please open the channel menu by clicking on the right mouse button when the mouse is in the channel list and select the function "Split" from the pop-up-menu.



Both, the TV and the radio list (depending on what is shown/hidden) will be shown double. It is of course the same list, but you can see two different views of it. Changes in one of these lists will affect the other list too. You can move channels from the upper list to the lower list, it is the same list but in one list you can have the beginning of your list (channels 1-22) and in the second the end of the list (here channels 31 to 50).

If you make many changes to the channels, please remember to save from time to time. To do this hit the „file“ button. From the drop-down menu please select „save“ to save the file. If you want to keep your original file and you would like to save the file under a different file name, you should use the „save as“ function in the file menu.

Enter the name you want the file to have and click on the „save“ button.

3.c. Provider

In chapter 5.d. there is also a short summary of the provider functions.

Each channel has a channel name and a provider name. You can enter the provider name arbitrary for each channel (see chapter 3.e.).

In the receiver you can sort your channel list by these provider names. In SetEditTonbury the provider list shows you all existing provider names.

If you want to create a new provider, you only have to change the provider name of one channel and this provider name will also appear in the provider list.

To add one or more channels to a provider please select the channels and drag them with the mouse to the provider name.

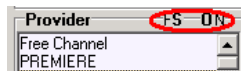
If you select a provider in the provider list you will see all channels that have this provider name in the channel list.

The providers can be used to combine channels that normally belong to different providers. This enables the SetEdit user to group channels without using the Favourite lists.

If you change the order of the channels within a provider, the order of the channels in the main list will be changed too and the channel will get another channel number.

Often you can't see all providers at once in the provider list, so you have to scroll the provider list. To do this while you try to drag a channel to a provider just move the mouse towards the border of the provider list, the list will scroll towards this direction then.

If you want to move many channels to one provider it is easier to fix the provider list. To do this click on the "F" in the frame round the provider list



Now the provider list does not jump to the provider of the selected channel. If you want that the provider list scrolls to the provider of the selected channel again, click on the "S" in the frame around the provider list.

A channel can only be in one provider. Sometimes you would like to have a channel in more than one provider. To do this you can create channel duplicates (which will have different channel numbers). Please click on a channel for which you would like to create a duplicate, then open the channel menu and select "copy" from this menu. Now select the position in the channel list where you want to have the duplicate and select "paste" from the channel menu. The original channel and the pasted channel are now marked red to show you that this is a duplicate channel. If you don't want to open the channel menu every time you can also use shortcuts for this function, Ctrl-C is for copy and Ctrl-V is for paste.

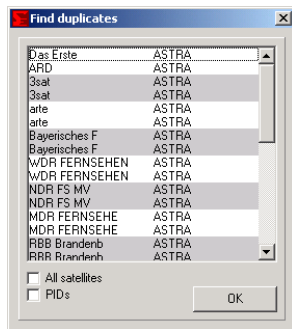
There are two ways to find such a duplicate later:

When you move the mouse over a channel which is marked in red, you get a hint showing the number of a channel that is a duplicate of this channel.

To find such a channel, first click on the channel list, then you can enter the channel number from the keyboard, so if you hit the key "1" channel 1 will be selected, "1" + "4" will select channel 14 etc. As with finding the channels by name, you have to enter the numbers within 3 seconds, otherwise the last number entered will be taken as the first digit.

If you enter "1" + "4" within 3 seconds, channel 14 will be selected, whereas if you pause for more than 3 seconds between the "1" and the "4", first channel 1 and then channel 4 will be selected.

You also have the possibility of using the "find duplicates" function. Click with the right mouse button in the channel list and select "find duplicates" from the popup menu you now get. You will see the following window:



All duplicates are shown now. The different pairs of duplicates are marked in different colours. This function does not distinguish between different types of channels, i.e. it maybe that you first see a pair of TV channel duplicates and then a pair of radio channel duplicates.

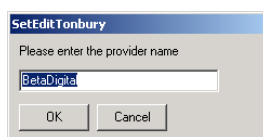
Relevant for this search are the transponder and the channel ID, but not the name. If you activate the option "PIDs", the PIDs will be compared too.

From the "Find duplicates" you can also delete channels, move them or assign them to a new transponder, provider, satellite or to a FAV list.

There are no empty providers in the provider list. If you delete all channels of a provider or if you move all channels of a provider into another provider, this provider will be deleted from the provider list.

To delete a selected provider with all channels that use this provider, you have to click with the right mouse button into the provider list and chose "Delete" from the popup menu you get, or hit the DEL key on your keyboard.

It is possible to change the name of a provider (the provider name will be changed for all channels that use this provider too). To do this you have to click with the right mouse button into the provider list and chose "Change name" from the popup menu you get (the provider has to be selected) or double click on the name of the provider. You get the following dialogue:

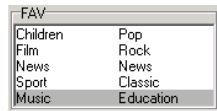


Here you can enter a new name for the provider.

3.d. Favourite lists

The Tonbury receivers have 5 favourite lists for your favourite channels. The advantage of favourite lists is that you can put a channel in more than one favourite list without being forced to create a duplicate of this channel (with the consequence that one channel has two different channel numbers). This can be useful for families because every family member can create his/her own favourite list.

To assign one or more channels to a FAV list, please select the channels and move them by drag & drop to the name of the FAV list.



Channels that are in a FAV list are marked with a different colour in the channel list. To change this colour please see chapter 5.b.

Within a FAV list you can change the order independently of the order in the main list. To do this please click on the FAV list you would like to change, then you see all channels that are in this FAV list. If you now change the order by using the drag & drop function you will only change the order within this FAV list but not the order of the main list.

To remove a channel from a favourite list you first have to select the FAV list you want to remove channels from.

If you now delete channels they are only removed from the FAV list but not from the main list.

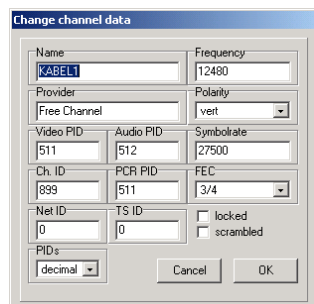
To change the name of a FAV list you can either hit the Enter key of your keyboard or make a double click on the FAV name, you will get the following window



where you can enter the name of the FAV list.

3.e. Channel parameters

To rename a channel (e.g. "Das Erste" to "ARD") please select the channel and choose from the channel menu the function "change data" (or double-click on the channel), then you get the following menu:




In the field "Name" you can now enter the name of the channel.

In the field "Provider" you can change the provider name of a channel. If this provider does not exist in the provider list yet, a new provider will be created. (see chapter 3.c.)

Furthermore you can change the transponder data (frequency, polarity, symbol rate, FEC, Net ID and TS ID), the PIDs and the Channel ID of the channel (see chapter 3.h.).


With "PIDs" you can choose whether the PIDs are shown decimal or hexadecimal.

You can also mark a channel as "locked" or "scrambled" within this menu or remove these markings.

If you lock a channel this means you have to enter the parental pin to watch this channel. These channels will be marked in the channel list with a key symbol. Scrambled channels are marked with the symbol: .

Note: If you remove the scrambled symbol this does not mean that the channel can be watched for free. This is just the marking of the channel.

With the function "mark as" from the channel menu you can mark more than one channel as "(un) locked" or "(un) scrambled".



Many channels are only shown in uppercase letters. To change this, you don't have to enter a new name for each channel. Simply select the channels whose name you want to change and select the function "DISNEY CHANNEL -> Disney Channel" from the channel menu.

The first letter of the individual words is never changed by this function. If mixed upper/lower case letters occur in the word, nothing is changed (e.g.: EinsMuXx). Words with less than 4 letters are also not altered, so that abbreviations such as CNN stay unchanged.

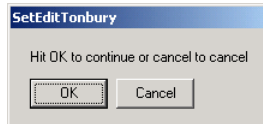
In the file SetEdit.ini there are lists of exceptions (which can be changed) to these rules. There is a list of 10 words, which are not converted although they contain more than 3 letters, (e.g.: ESPN, CNBC) and a list of 10 words, which are converted although they are shorter than 4 letters (e.g.: "CO" so that from KRIMI&CO you get Krimi&Co).

The reasons why you might be interested in changing the channel names to lower case are that mixed-case writing is easier to read and lowercase letters are often narrower than uppercase letters, so that when you have more lower case letters in the channel name more letters can be shown in the channel list of the receiver. Channel names that do not fit within the channel list are truncated.

3.f. Write settings into the receiver

When you have finished making your personal settings you have to write them into the receiver before you can use them.

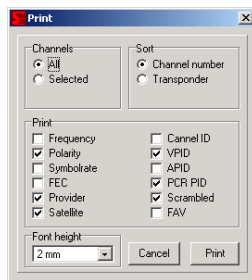
To do this please click on the button "File" and select the function "write into receiver" from the drop-down menu. You get the following message:



Please click on "OK" in this message and the settings are transferred into your receiver.

3.g. Print settings or export settings

You can print your settings. To do this click on the "File" button and select from the drop-down menu the function "Print". You get the following dialogue:



First you have to select whether you want to print all channels or only the selected (highlighted) channels.

Now you have the choice whether the channels are to be sorted by channel number or by transponder (frequency).

There are some options. You can choose if you also want to print the channel number, the frequency, the satellite, the provider, the PIDs and the flags showing if a channel is scrambled or in a FAV list.

Finally you can enter the Font height for your print-out.

Now when you click on the button "Print" a printing dialogue will appear, whose layout depends on the printer which you have installed.

With the "export" function you can export your settings to a plain ASCII file that can be opened with Word or Excel or other applications. The parameters are separated by a tab character (0x09).

Except that only a file is produced and you have to enter the filename, everything works just as with the print dialogue.

3.h. Using the transponder functions and entering new channels by hand

There is a short summary of the transponder functions in chapter 5.f..

Possibly when you read the settings from your receiver you wondered about channels with strange names (like "unknown") and that some channels were missing in your list (e.g. German Premiere, soccer, Formula-1 or pay-per-view channels).

Channels that share place (like the German ARTE/Kinderkanal) can only be found in the receiver if they are active at the time you make the channel search. Some of the Premiere Direkt, soccer and Formula-1 channels are found, but not with the right name.

In the Internet there are sites (e.g. www.Lyngsat.com) where you can find all channel settings (including the missing pay-per-view or soccer channels).

Suppose you discover on www.lyngsat.com that on satellite X a new transponder is active.

12656 H tp F3	ANEM TV Anem	A	MPEG-2	2963 - 3/4 1 - 4194	0-176 4195 Se	Europe	W Zarenba 020221
	62-92	A	F	1	4195 Se		
	62-92	A	F	1	4197 Se		

Here we see that transponder 12656 horizontal is new and one scrambled TV channel (Anem, the orange background shows you that the channel is scrambled) and two audio channels (B2-92 with two different audio PID) are active on this transponder.

Now you have the possibility to create a new transponder first and then enter the channel on this transponder. Or you can directly enter a new channel with the right transponder data on the satellite. Both methods may be useful, so both will be described in the following:

To create a new transponder, you first have to select the satellite this transponder is on. Then you click with the right mouse button in the transponder list and select in the drop-down menu the function "New" -> "Transponder". You see the following window:

Change transponder data

Frequency: 12656	Net ID: 0
Polarity: hor	TS ID: 0
Symbolrate: 0	
FEC: Auto	
OK	
Cancel	

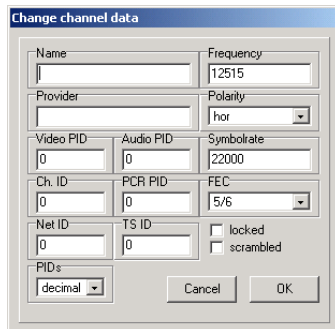
For the example mentioned above you enter 12656 for the frequency and HOR for the polarity. The symbol rate in this case is 2963 and the FEC is 3/4.

The green numbers in the Lyngsat chart are the NETwork ID and the TS ID (here NET ID = 0 and TS ID = 176).

Please confirm with OK then you will find the new transponder at the end of the transponder list.

Now you can enter the new TV and radio programs on this transponder.

To do this select the new transponder and click with the right mouse button in the now empty channel list and select the function "new" from the channel menu you get.



You can also click with the right mouse button in the transponder list (the new transponder has to be selected too) and with "New" you can choose the function "TV channel on this transponder" or "radio channel on this transponder". You will get the same window.

The correct transponder is already entered.

If you want to enter a channel directly, please select the satellite for this channel, click with the right mouse button in the channel list and select the function "New" from the menu you get.

You will get the same window as with the other method again, except that in this case the transponder data has to be entered in the fields "Frequency", "Polarity", "Symbol rate" and "FEC".

In the field name you can enter the name of the channel (here Anem), then you have enter the PID and the channel ID.

In the field "provider" you can enter a provider name for this channel. If this provider does not exist in the provider list yet, a new provider is created.

The TV channel Anem for example (see list above) has Video PID 4194 and Audio PID 4195, the channel ID (Service ID) is 1 and the PCR PID is as a rule identical with the Video PID, so don't forget to enter it!

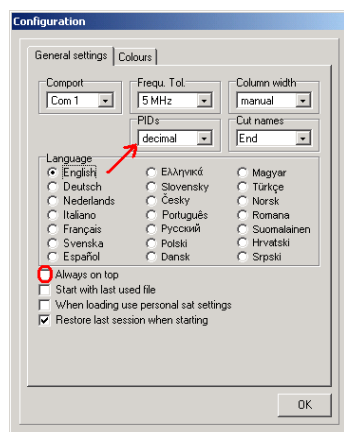
For the Audio (radio) channels of course no Video PID is given.

When you have entered all the parameters please click on OK and the new channel will appear at the end of your channel list.

As soon as a satellite has one channel it is shown as being active (appears in green). Satellites that have no channel have a white background. (You can change these colours in the configuration.)

Sometimes you would like to create new channels that differ in only a few details from existing channels. In this case it is useful to create a duplicate (with the copy and paste functions of the channel menu) and then change in this duplicate only the parameters that differ.

Note: In some lists the PID are given in decimal notation, in others in hexadecimal notation (see chapter 8). You have to be aware of that when you enter the PIDs. In the configuration menu you can specify if you want to see/enter PID in decimal or hexadecimal form.



When you enable the option "always on top" in the configuration menu, SetEdit will always be in the foreground on your desktop. This can be useful when you work with such Internet lists, as the SetEdit program will not go into the background when you click in the browser.

You also change the notation of the PIDs if you click on the "H" for hexadecimal or "D" for decimal in the border of the "Info" section.

To compare your settings file with lists in the Internet that are often sorted by frequencies you have the possibility to sort the transponders of your settings file by frequency. To do this click with the right mouse button in the transponder list and select "sort by frequency" from the menu you get. Alternatively you can also sort the transponder list by polarity.

3.i. Import of channels, other settings and how to convert a settings file

You have the possibility to get ready-made settings lists from the Internet. These lists can be used partially or completely. You can find such lists for example at the following URL's:

The most current settings lists for the DVB2000 (Nokia 9500) are on www.dxandy.de. It is possible to import channels from these settings into your SetEditTonbury list (especially exotic channels are up-to-date in this list).

On www.lyngsat.com/nokia/index.shtml or on the SatcoDX site (you can find a link on my homepage) you will also find listings of all satellites.

There are three possibilities to use such settings files:

Other SetEditTonbury settings files

You can load settings files that are created for the Tonbury receivers directly into the SetEdit main list (with File -> Open) and then write them into the receiver.

If you want to load such settings you may get problems because in addition to the pure channel data, the Satellite set-up is also included in this settings file. These satellite settings may be not the ones you want or may even be completely wrong (LOF configuration). SetEdit allows you to save your own satellite settings separately and restore them after opening the new file. To do this you should first read one time the settings from your receiver and then save the satellite settings from this settings file.

Please select in the satellite menu "save satellite configuration" to save your configuration and "load satellite configuration" to overwrite these settings in a loaded file with your previously saved settings.

The satellite configuration of a settings file is saved separately for each satellite. To check it please double-click on the satellite or select "change data" from the satellite menu.

The other functions of this menu are explained in chapter 5.e.

If you often take settings from the Internet but always want to keep your satellite settings, you can enable the option "when loading use personal sat settings" in the configuration menu. Then this part of the settings is always taken from your previously saved configuration.

The import function

You can import channels from all settings formats that are supported by SetEdit in your SetEditTonbury settings. In the standard version you can import channels from SetEditTonbury settings, DVB2000 settings, Lyngsat DAT charts and SatcoDX SDX files.

You can add other formats by copying the corresponding modules (SetEditXXXX.dll) into the SetEdit directory (see chapter 2.).

Please click on "File" -> "New" and select the format of the settings file, from which you want to import channels.

New		DVB2000	Ctrl+Alt N+D
Open	Ctrl+O	SatcoDX SDX	Ctrl+Alt N+X
Last files		Nextwave 2500	Ctrl+Alt N+1
Clear last files list		Samsung S7	Ctrl+Alt N+2
Read from receiver	Ctrl+R	Tevion203	Ctrl+Alt N+3
Backup		Tonbury	Ctrl+Alt N+4
Save	Ctrl+S	Xtreme	Ctrl+Alt N+5
Save as		Zehnder	Ctrl+Alt N+6

A second window with the chosen settings file will be opened. In the same way you can open a third or even more settings files. Each of these lists is equivalent. Every format (DVB2000, SatcoDX, Lyngsat or other added formats) has its own symbol.

SatcoDX and Lyngsat files are only Internet lists, so the functions "Read from receiver" and "Write into receiver" do not exist for these formats.

Now you can easily transfer one or more channels by drag & drop from one window into another or "Copy" and "Paste" them with the corresponding functions from the channel lists menu.

Note: As the Tonbury receivers only support digital channels, you can't import analogue channels. It may happen, that there are analogue channels for example in a SatcoDX file. In the configuration of the Satco settings file you can choose, if you only want to see analogue or digital channels or both.

In the different settings formats there are different channel parameters. If a parameter only exists in the destination list but not in the source list (e.g. there are no text PIDs in the SatcoDX files), a standard value will be taken for this parameter.

You can also drag and drop groups of channels (for example a whole transponder with all its channels.) from one window into another.

Source:

Channel list: The selected channels will be transferred.

All other lists (satellites, providers, labels, transponders, etc): All channels of the chosen list will be transferred.

Destination:

Channel list: The imported channels will be pasted at the location the cursor is on at the moment you paste the channels. Sometimes it is only possible to paste a channel, if a definitely assignment (e.g. to a satellite) is possible in the destination list.

If you paste a channel in a SetEditTonbury settings list and a satellite is selected, the pasted channel will be assigned to this satellite. If "All" is selected in the satellite list, the pasted channel will be assigned to the satellite of the channel the cursor is on when you paste the channel.

Transponder: A transponder is always definitely assigned to a satellite. So if you assign a channel from another window to a transponder, these channels will be assigned to the satellite of this transponder and will get the transponder data of this transponder.

If you drag and drop a transponder from one window into the transponder list of another window, this transponder with all its channels will be added as a new transponder.

Note: If you import a transponder from another window, this transponder will be added to the satellite that is selected. If "All" is selected in the satellite list, the new transponder will be added to the satellite of the transponder the cursor is on.

If you drag and drop a satellite, FAV list, label, provider, etc. with all its channels to the transponder list of another window, all these channels will be added to the transponder the cursor is on.

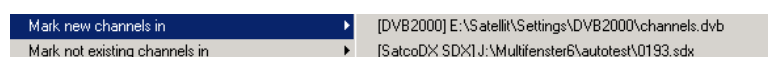
Note: It may happen that you can't receive a channel, if you assign it to the wrong transponder.

Satellite: The imported channels will be added to the satellite the cursor is on. Transponders that don't exist yet in the transponder list of the destination settings file, will be created.

Favourite list: A direct import into the favourite lists is not possible.

In the popup menu of the channel list there are two functions, which may help you to compare the channel lists of different settings files.

With the function "Mark new channels in" you can mark in another window the channels, which do not exist in your actual list. (The channel number of these will be marked in green)



If more than two lists are opened, you have to choose in which list you want to mark the new channels. If only two windows are opened, only one possibility is given.

With the function "Mark not existing channels in" you can mark in your actual list those channels (the channel number will be marked in red) which do not exist in another window.

If more than two lists are opened, you have to choose the channel list, you want to compare your actual list with. If only two windows are opened, only one possibility is given.

With "Remove not existing channel markings" or "Remove new channel markings" you can remove the corresponding markings. These functions will only appear in a channel list menu, if there are such markings in the channel list.

If you have marked the "new channels" or the "not existing channels" in a channel list, you can select them all. Please click in the channel lists menu on select and choose the corresponding entry ("all not existing" or "all new". This entry will only be shown in the menu, if there are such markings in the channel list.

Note: For the import of channels it is useful, to choose in the configuration the value 5 or even 10 MHz for the frequency tolerance. It may happen that the frequency of the same channel differs just a little bit in different lists. If the frequency tolerance is 0, these channels will be marked as "new" or "not existing" too. But a difference of only some MHz is insignificant to the receiver, so you don't need to import these channels.

Convert a settings file

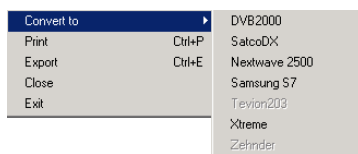
You can convert all settings formats that are supported by SetEdit and for which you have got the corresponding module (in form of a .dll file) into the SetEditTonbury format.

In chapter 2. is described how you can add other SetEdit modules.

Please load with "File" -> "Open" the settings file you want to convert into another format.

Note: You can only convert a settings file into the SetEditTonbury format, if you have already saved your satellite configuration (see above). If you want to convert a SetEditTonbury settings file into another format, it depends on this format, if you first have to save the satellite configuration for this format or if this is not necessary (e.g. DVB2000, SatcoDX or Lyngsat).

Now you can convert the loaded settings file. To do this, please click on "File" -> "Convert to" and select the format you want to convert this settings file to.



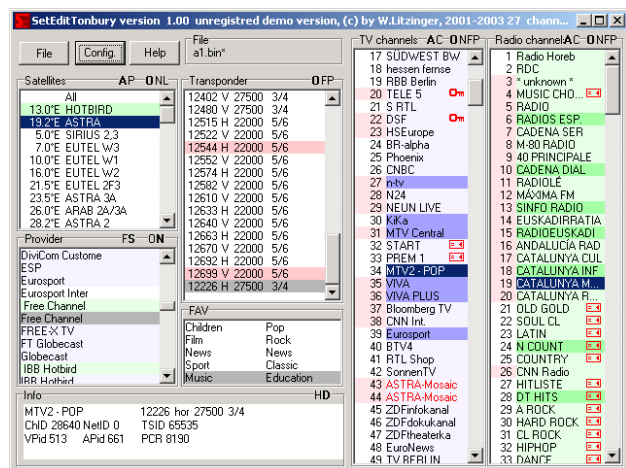
Now you see the loaded settings file in the new format with the corresponding SetEdit version on your screen.

Note: The different settings formats often contain different information, so you will always loose information, when you convert a settings file. If you convert e.g. a SetEditTonbury settings file into the SatcoDX format and back, you will see that all favourite channels are gone, because the SatcoDX settings don't have favourite lists. If you convert a SatcoDX settings file into the SetEditTonbury format and back, you will recognize, that all analogue channels have disappeared. The Tonbury receivers only support digital channels.

In the same way it may happen that certain PIDs (e.g. the text PID), volume information or the flags for "Scrambled" or "Locked" disappear.

4. Program use and personal configuration

SetEditTonbury is mostly used with the mouse. Many functions can also be called with keyboard shortcuts.



On the main window you will find a group of buttons for the general functions (file, config and help) and the lists that contain the satellites, transponders, providers, favourite lists and the channels. If you hit the right mouse button in one of these lists (except the FAV list) you will get a popup menu with the specific functions for this list.

With "Help" you can open the help file or look for updates of SetEditTonbury.

In some frames you find uppercase letters. If you click on these letters you can change some viewing modes.

Every window that comes in SetEditTonbury (except the main window) can be closed by hitting the ESC key on your keyboard.

In some lists you may find the following red symbols. These symbols indicate



Scrambled channels

Locked channels

If a channel name is marked red there is a duplicate of this channel in the settings, please move the mouse over this channel to see which channel number is a duplicate of this channel.

Transponders marked in red are empty, they contain no channels.

TV channels appear in light blue, radio channels in light green.

TV channels which are in a FAV list are marked in a darker blue colour, radio channels which are in a FAV list are marked in a darker green colour.

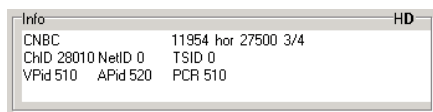
If the channel number is marked with a red background colour, the channel is assigned to a vertical or right hand circular polarised transponder. If the channel number has a white background colour, the channel is assigned to a horizontal or left hand circular polarised transponder.

If a satellite has a green background colour, it is activated (programmed), that means there are already channels on this satellite.

When you select a channel, the satellite, transponder, provider and FAV list (if the channel is in a FAV list) are marked with a different colour.

You can change all colours in the configuration menu.

In the lower left corner you will find an "Information" section, where the parameters of a selected channel, transponder or satellite are shown.

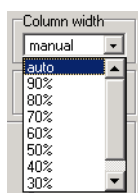


When you select a satellite in the satellite list only the transponders and channels that are in that satellite are shown in the transponder, TV and radio lists. When you click on a transponder/provider/FAV list only the channels that are in this transponder/provider/FAV list are shown.

You can adapt the design of SetEditTonbury to your personal wishes.

To change the size of the main window you can either click on the maximise button in the upper right corner or drag one of the margins of the window.

If the main window is large enough, the channel lists can be shown in more than one column. Then you have more channels in view. You can change the width of these columns in the configuration menu on the tab sheet "General settings". In the section "Column width" you can enter if a new column is created, when 100 % (auto) or 90-30 % of the channels are shown completely. The other channel names are cut.



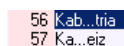
With "manual" you can enter the column width by hand. Select the function "Setup column width" from the menu of the channel lists and then you can click on the position where you want to have the right border of the first column.

Note there is a minimum width of columns that you can't go below. If the window is too small for more than one column only one column is shown, in this case of course you can't change the column width.

In the section "Cut names" you can enter if the channel name is cut at the end,



or if a part of the channel name is cut from the middle.



In the configuration you can also change the menu language of SetEditTonbury and specify whether the PIDs are shown in decimal or hexadecimal form. You can also change the viewing mode of the PIDs, if you click on the letters "H" for hexadecimal or "D" for decimal in the frame of the "Information" section.

Also in the configuration menu but on the tab sheet "Colours" you can enter the colour in which active (programmed) satellites, horizontal or left hand circular polarised transponders, vertical or right hand circular polarised transponders, TV channels, radio channels, TV or radio channels which are in a FAV list, transponder, satellite, provider or FAV list of an actually selected channel (Active Tr/Sat/FAV), channel duplicates, empty transponders, new or not existing channels (for the import function, see chapter 3.i.) and the icons for locked or scrambled channels are shown.

Especially when you want to move channels from the beginning to the end of your list, it may be useful to use the split function. With this function you can split your list into two parts, one showing the beginning and the other showing the end of your settings (see chapter 3.b.).

With a double-click on the frame "TV channels" and "Radio channels" only the TV or Radio channels are shown. With another double-click on this frame the other list shown again. You can also get this function with the "show" function in the channel menu.

For some functions you also have shortcuts for keyboard using:

- Ctrl-O: Open a settings file
- Ctrl-S: Save settings
- Ctrl-R: Read settings from the receiver
- Ctrl-W: Write settings into the receiver
- Ctrl-P Print settings
- Ctrl-E Export settings
- Alt-R: Show only radio channels
- Alt-T: Show only TV channels
- Alt-A: Show TV and radio channels
- Ctrl-0: Load the last used file
- F1: Help
- F2: Satellite list
- F3: Label list
- F4: Transponder list
- F5: Provider list
- F6: FAV list
- F7: TV list
- F8: Radio list
- F9: Data channel list
- F10: Configuration
- F12: toggle between "Show only channels" and " Show all information"

Depending on the editor you are using, some lists are not available, for example the DVB2000 has no satellite list.

To close a SetEdit window please click on this button:



or select "Close" from the "File" menu. If only one editor window is opened you close the complete program.

If you select "Exit" from the "File" menu all open editor windows are closed. In the configuration you can enter with "Restore last session when starting" that all opened editor windows are reopened when you start the program the next time.

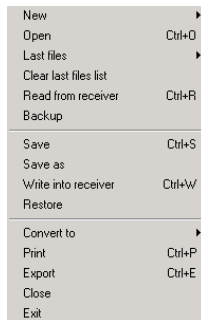
When you like to use this function you have to use finish from SetEdit with the "File" -> "Exit" function. If you close all windows one by one only the last opened window will be restored.

Note: If you have unsaved changes you are asked if you want to exit or first save these changes.

5. Functions

5.a. File functions

To get the file functions, please click on the "File" button. You will get the following popup menu:



With **New** you can open another window of SetEdit with the same or another format, e.g. for the import of channels or if you want to compare different channel lists. (see chapter 3.i.)

With **Open** you can load settings from your disk.

With **Last files** you get a list of the 10 last used files which you can load.

With **Clear last file list** you can remove all entries from the last file list.

With **Read from receiver** you can read the settings from your receiver into SetEditTonbury. When you have clicked on "OK" in the message you get, the settings are read from the receiver and shown in SetEditTonbury.

With **Backup** you can transfer the settings from the receiver directly to your hard disk without having them in SetEdit. You will first get a window in which you can give a name for the file and specify where it is to be saved. Otherwise the procedure is similar to "Read from receiver".

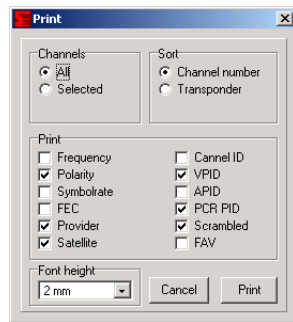
With **Save** or **Save as** you can save the current settings in SetEditTonbury to disk.

With **Write into receiver** you can transfer the settings from SetEditTonbury to your receiver. When you have clicked on "OK" in the message you get, the settings are written into the receiver.

With **Restore** you can transfer settings from your hard disk directly to your receiver. First you will get a window in which you can enter the name of the file and say where it was saved. Otherwise the procedure is similar to "Read from receiver".

With **Convert to** you can convert your actual loaded settings file into another settings format. To do this you first have to save your satellite configuration. (see chapter 3.i.)

With **Print** you can print your settings.



You have two ways of printing your settings. You can either sort the list by the channel numbers or by the transponders of the channels (to compare your settings with lists in magazines).

If you print your channels in number sequence, you can also select whether you want to print all channels or only the selected ones.

The channel number and name are always printed, additionally you can print the transponder data (frequency, symbol rate, FEC, polarity) and the channel parameters such as the Channel ID, the PIDs and the flags for scrambled and FAV.

In the field "Font size" you can enter the size of the font that is used for printing. If more than one column will fit on the page you will get a multi column printout.

With **Export** you can save your settings as an ASCII file (e.g. to be printed). You get the same dialogue as for the print function

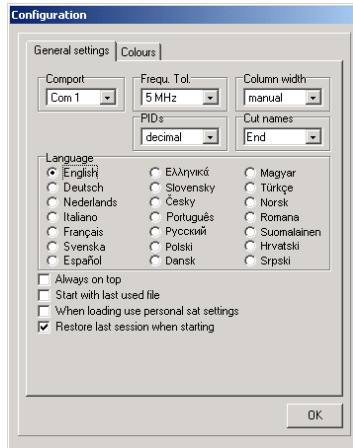
With **Close** you close the actual active SetEdit window. If only one window is opened you close the complete program.

With **Exit** you exit from SetEdit. All open editor windows are closed. In the configuration you can enter with **Restore last session when starting** that all opened editor windows are reopened when you start the program the next time.

When you like to use this function you have to finish SetEdit with the **File -> Exit** function. If you close all windows one by one only the last opened window will be restored.

5.b. Configuration

Click on the **config** button to change the general settings of SetEdit. There are two tab sheets in the configuration menu. If you click on "General settings" you get the following menu:



In the field **Comport** you can select which comport of your PC is used to connect to your receiver.

The value **Frequency tolerance** is used when importing and indicates the tolerance a transponder frequency may have relative to the imported one to be considered to be the same. If you have for example a transponder with the frequency 11721 MHz in you settings and you import a channel with the frequency 11720 MHz and the frequency tolerance is set to 5 MHz no new transponder is created. This tolerance is also used for the transponder list.

With **Column width** you can select if 100% (auto) or 90%-30% of all channels have to fit completely to a column. All other channel names are truncated. With "manual" you can enter the column width by hand. Please select the function "Setup column width" from the menu of the channel lists and then you can click on the position where you want to have the right border of the first column.

Note: There is a minimum width of the columns. If the window is not large enough to show more than one column only one column is displayed and this value has no meaning.

In the field **PIDs** you select how the PIDs are shown/entered (decimal or hexadecimal). You can also switch between these two viewing modes, if you click on the "H" for hexadecimal or the "D" for decimal in the frame of the "Information" section.

In the field **Cut names** you can enter, if channel names that are too long (see column width), are cut at the end or in the middle.

With **Language** you can select the menu language you would like. This language is taken for all opened SetEdit windows.

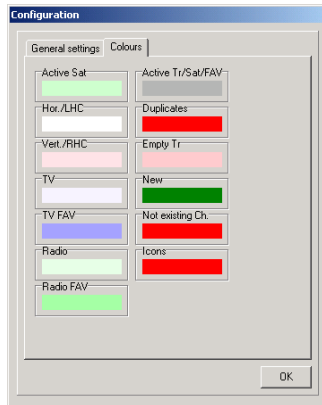
With **Always on top** SetEditTonbury always stays on top of your desktop.

With **Start with last used file** you can specify that every time you start SetEditTonbury it automatically opens the last file used.

With **When loading use personal sat settings** you can overwrite the satellite configuration of any loaded settings with the satellite configuration which you previously saved (see chapter 3.i.)

If **Restore last session when starting** is activated, all editor windows that were opened when you closed the last session are reopened (see chapter 5.a.).

If you click on the tab sheet "Colours", you will get the following menu:



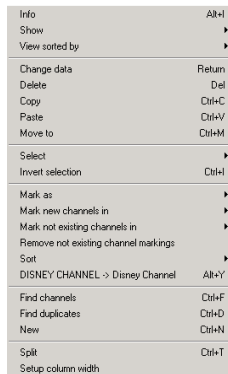
Here you can change the colours for **activated** (programmed) **satellites**, **horizontal** or **left hand circular** polarised transponders, **vertical** or **right hand circular** polarised transponders, **TV channels**, **radio channels**, **TV or radio channels which are in a FAV list**, transponder, satellite, provider or FAV list of an actually selected channel (**Active Tr/Sat/FAV**), **channel duplicates**, **empty transponders**, **new** or **not existing channels** (for the import function, see chapter 3.i.) and the **icons** for locked or scrambled channels

With a double click on the frame of a colour field, you get the default colour again.

5.c. Channel functions

Before you can edit a channel you have to select the channel.

You get most functions when you click with the right mouse button on a channel list. You will get the popup menu of the channel list:



Some entries in this menu are only visible, when you are using the import functions.

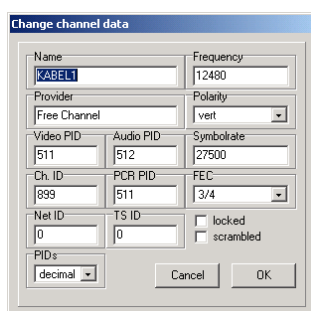
Info: here you get the number of channels, satellites, transponders and providers that are in your settings.

With **Show** you can change the viewing mode of SetEditTonbury. You can select if you only want to see the TV or the radio channels or both. Alternatively you can double-click on the TV/Radio frame to change the viewing mode.

With "Show only channels" you can hide the satellite, transponder, provider and FAV lists and the data window. With "All lists" you can see all lists again.

With **View sorted by** the channel list can be shown in the **original** order, sorted **alphabetically** or sorted by **frequencies** or **polarities**.

With **Change channel data** you can change the properties of a channel such as name, transponder etc. You can also hit the return key or double-click on the channel.



You get this window. Here you can change the **name**, the **provider** (if this provider does not exist in the provider list yet, a new provider is created), the **transponder data** of the channel, the **PIDs** and the **Channel ID** of the channel and whether the channel is **locked** or **scrambled**.

With **PIDs** you can choose if the PIDs are shown decimal or hexadecimal.

You can find a longer description of the different PIDs and Transponder data in chapter 3.h..

With **Delete** you can delete a channel or remove it from a favourite list.

You can delete one or several channel if you first select the channels and then hit the Delete key on the keyboard.

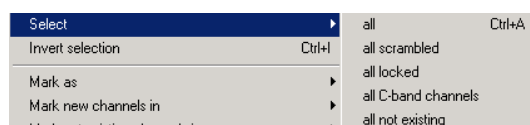
Note: When you delete channels from a transponder they will also be removed from the FAV lists. When you delete within a FAV list the channels will only be removed from the FAV list but not from the main list.

With **Copy** you can copy a channel, then you can paste the channel to another position.

With **Paste** you can paste a channel that was previously deleted or copied.

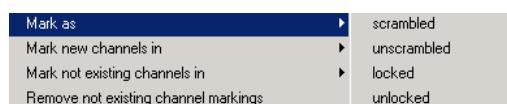
With **Move to** you can move a channel to a position you enter with the keyboard.

With **Select** you can select **all**, **all scrambled**, **all locked**, **all C-band channels** or (for the import) **all new** or **all not existing** channels (depending on which channels are actually marked).



With **Invert selection** you can invert the selection, the channels that are selected will become unselected and vice versa.

Mark as you can mark one or more selected channel(s) as **(un) locked** or **(un) scrambled**.



Mark new channels in: If you have opened more than one window of SetEdit (import), you can mark in another channel list, which channels you don't have in your actual channel list.

Mark not existing channels in: If you have opened more than one window of SetEdit (import), you can mark in your actual channel list, which channels you don't have in another channel list.

Remove new/not existing channel markings: With this function you can remove the markings for new or not existing channels in your actual list (import).

With **Sort** you can sort selected channels **by alphabet**, **by frequency** or **by polarity**.

With **DISNEY CHANNEL -> Disney Channel** you can change the names of the selected channels from upper case to lower case. Uppercase letters are usually wider than lower case letters, so this allows you to see more characters of the name in the channel list of the receiver.

Only words with more than 3 characters are converted. If there are both upper and lower case letters in the channel name the word is not converted (e.g. EuroSport stays as it is). In the configuration file of SetEditTonbury (SetEdit.ini) there is a list of up to 10 words that are converted although they are shorter than 4 letters (CO, INT, FOX) and a list of words that are not converted although they are longer than 3 letters (CNBC, ESPN).

With **Find channels** you can find channels by name. Alternatively you can use the 'Ctrl F' shortcut from the keyboard.

With **Find duplicates** you can look for channel duplicates.

With **New** you can create a new channel.

With the **Split** function you can tile the TV and radio list in two parts. It is the same list but from two points of view. Changes in one list also affect of course the second list. You can move a channel from the upper to the lower list of course.

The function **Setup column width** is only shown in this menu, when you have entered "manual" in the section "Column width" in the configuration menu (see chapter 5.b.). With this function you can enter the column width by hand. Please select this function and then you can click on the position where you want to have the right border of the first column.

Note: There is a minimum width for the columns. If the window is too small to show more than one column the column width has no effect.

To **move** a channel you simply drag it with the mouse to the position where you want it to be (drag & drop).

To **assign** one or more channels to a **satellite**, **transponder**, **provider** or a **FAV list** drag it/them with the mouse to the name of the satellite, transponder, provider or FAV list.

If you click on a FAV list, satellite, provider or transponder, you see in the channel list all channels, which are in this list.

In the frame of the channel list there are several uppercase letters for the following functions:

A: The channels and the satellite, transponder, provider and FAV lists are shown.

C: Only the channels are shown.

O: The channels are shown in original order.

N: The channels are shown in alphabetical order.

F: The channels are shown sorted by frequencies.

P: The channels are shown sorted by polarities.

5.d. Provider functions

First you have to select the provider you want to modify.
You will see all channels that belong to this provider.

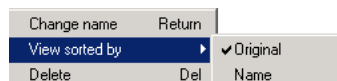
To add one or more channels to this provider please select the channels and drag them with the mouse to the provider name.

Each channel has a channel name and a provider name. You can enter the provider name arbitrary for each channel (see chapter 3.e.).

In the receiver you can sort your channel list by these provider names. In SetEditTonbury the provider list shows you all existing provider names.

If you want to create a new provider, you only have to change the provider name of one channel and this provider name will also appear in the provider list.

You get most functions if you click with the right mouse button on the provider list. You will get the popup menu of the provider list.



Change name: Here you can change the name of a provider. You also get this by double-clicking on the provider or by hitting the Enter key.

View sorted by: The providers can be shown in **original** order or sorted **alphabetically**.

Delete: Here you can delete a provider and all channels that belong to this provider.

It is not possible to change the sequence within a provider list independently of the main channel list.

In the frame of the provider list there are several uppercase letters for the following functions:

F: The provider list is fixed. That means it does not jump to the provider of the selected channel.

S: The provider list scrolls to the provider of a selected channel.

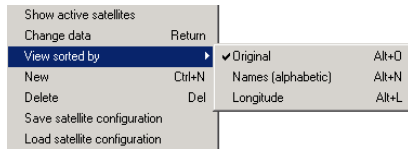
O: The provider list is shown in original order.

N: The provider list is shown in alphabetical order

5.e. Satellite functions

When you click on a satellite only the channels and transponders of this satellite are shown.

When you click with the right mouse button in the satellite window you will get the following popup menu.

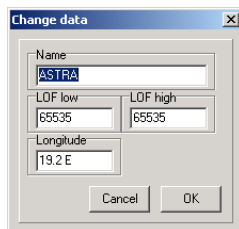


Show active satellites/Show all satellites:

With this function you can choose if you want to see all satellites in the satellite list or only the active satellites, e.g. satellites which already have channels.

Change data:

You will get the following window in which you can change the satellite-specific data (you can also double-click on the satellite to get this):



Here you can change the **Name** of the satellite, the LNB settings (**LOF low/high**) and the geographical position (**Longitude**).

View sorted by:

With this function you can choose if the satellites are shown in **original** order, or sorted **alphabetically** or by the geographical position (**longitude**).

With **New** you can enter a new satellite.

With **Delete** you can delete a satellite and all transponders and channels, which used this satellite.

With **Save satellite configuration** the satellite settings of the current settings are saved (see chapter 3.i. for more details).

With **Load satellite configuration** you can overwrite the satellite settings with the satellite settings that you saved previously. In the configuration menu you can enable that this is done with every settings file you load.

In the frame of the satellite list there are several uppercase letters for the following functions:

A: Show all satellites.

P: Show only programmed satellites.

O: Show satellites in original order.

N: Show satellites sorted by alphabet (names).

L: Show satellites sorted by their geographical position (longitude).

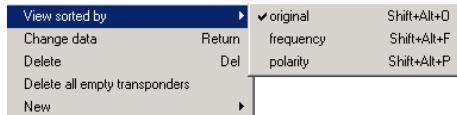
5.f. Transponder functions

If you select a transponder only the channels that belong to this transponder are shown.

If you select "All" in the satellite list you can move the mouse over a transponder to see the satellite of this transponder.

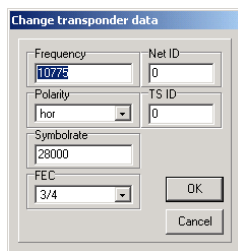
First you have to select the transponder you want to manipulate.

You get most functions if you click with the right mouse button on the transponder list. You will get the popup menu of the transponder list.



With **View sorted by** you can select if the transponders are displayed in their **original** order or sorted by **frequency** or **polarity**. The transponders will remain in the original order internally. You can also change the viewing mode of the transponders, if you click in the frame of the transponder list on the letters **O** for "original order", **F** for "sorted by frequencies" or **P** for "sorted by polarities".

With **Change data** you can change the parameters of a selected transponder. You can also call this function with a double-click on a transponder.



Here you can change the **frequency**, the **polarity**, the **symbol rate**, the **FEC**, the **Net ID** and the **TS ID** of a transponder. These changes are made for all channels that use this transponder too.

With **Delete** you can delete a transponder and all its channels.

With **Delete all empty transponders** you can delete all transponders that don't contain channels.

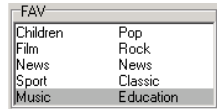
With **New** you can create a new **transponder** or a new **TV** or **Radio channel on the selected transponder**.

If you want to create a new transponder, and a satellite is selected in the satellite list, the transponder is assigned to this satellite. If "All" is selected in the satellite list and a transponder is selected in the transponder list, the new transponder is assigned to the satellite of this selected transponder. If "All" is selected in the satellite list and no transponder is selected, you can't create a new transponder.

5.g. Favourite lists

The Tonbury receiver have 5 favourite lists into which you can copy your favourite channels.

Each channel can be in more than one FAV list.



TV channels which are in a FAV list are marked in a darker blue colour, radio channels which are in a FAV list are marked in a darker green colour. (You can change these colours in the configuration.)

Add/remove a channel to/from a FAV list

To add a channel to a FAV list, please select the channel(s) you want to add to a FAV list. Now you can drag them to any of the FAV lists (drop them on the name of the list). They are added at the end of this FAV list.

To remove a channel from a FAV list, please select the FAV list and then the channel that you want to remove from the favourite list and use the **delete** function of the channel list menu or hit the Del key on your keyboard. If you delete a channel within a FAV list, this channel is only removed from this FAV list and not from the main list.

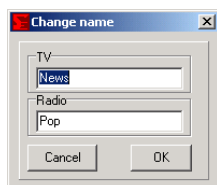
Change channel order within a FAV list

To change the order of the channels of a FAV list, please select the channel(s) you wish to move. Now you can drag them to the position within the FAV list where you want to have them (drop them on the new position).

Within a FAV list you can change the order independently of the order in the main list. If you now change the order by using the drag & drop function you will only change the order within this FAV list but not the order of the main list. In the opposite way the order of the channels in the FAV list will not change, if you change the order of the channels in the main list.

Change the name of a FAV list:

To change the name of a favourite list you can either select this FAV list and then hit the "return" key on your keyboard or make a double-click on the FAV list. You get the following window:



Here you can enter the name you want this FAV list to have.

6. Problems

If you have problems with the serial connection please check your serial cable. It has to be a serial null-modem cable with the following pin connections:

2-3
3-2
4-6
6-4
5-5
7-8
8-7

If you have any other problems please feel free to contact me by email.
My email address is Wolfgang.Litzinger@setedit.de

7. Register

You can get your registration key for 19.99 € from me. I need your full name and your email address. I can't send you the registration key by post

In the demo version you can only change 20 channels. After this you can neither save your settings nor write them into your receiver.

Note: *Without your email address and your full name I can't register you for SetEditTonbury.*

To register for SetEditTonbury there are 4 possibilities:

1. You send me the money in cash.

My address is:
Wolfgang Litzinger
Wasseraecker 8
67705 Trippstadt
Germany

2. You can make a direct money transfer.

Note: If you transfer from outside Germany please make sure that you pay the fees for international money transfer.

My account is:

Account number 44 609 52 00

Bank name: Bank 24

Sort code: 380 707 24

SWIFT: DEUT DEDB

Bank address:

Postfach 24

Karl-Legien Str. 188

53244 Bonn

Germany

Please use as the subject your name, the program you wish to order (here SetEditTonbury) and add a random number (e.g. your zip code).

Please send me an email when you have transferred the money, because often I can't read your mail address from the statements of my bank account. The body of the mail should contain your name, the program you wish to order (here SetEditTonbury) and the random number you wrote in the money transfer subject.

Note: If you are not absolute sure that you are paying all fees for international money transfers, please add 4 Euro, this is the fee that I am charged for most of the international money transfers.

Please don't sent me pictures of your transfer sheet or online banking program, you will get the key as soon as I have the money on my bank account, I check my account every day.

3. The easiest way to pay from outside Germany is to pay by credit card (Visa/MasterCard or American Express). Please use the order form on the next page, print it and fill out all fields and then send it to me by fax +49 (0) 6306 993453.

4. You can also use the online shop on my homepage to pay by Visa/MasterCard.

Order for SetEditTonbury

(Please write in block letters, faxes are often hard to read)

Date: _____

From:

First name: _____

Last name: _____

Email: _____

Note: if you don't get a reply within 3 working days I couldn't read your mail address or the address was not valid, please sent me a mail so I can see your correct mail address)

Street: _____

ZIP code: _____

City: _____

Country: _____

Fax _____

To: Wolfgang Litzinger

Company: SetEdit

Fax number: +49 (0) 6306 993453

Visa//Mastercard

American Express

Card number: - - - - - - - - - - - - - - - -

3 - - - - - - - - - - - - - - - -

Expire date - - / - -

- - / - -

I have tested the demo version of SetEditTonbury successfully and allow you to charge 19,99 Euro from my credit card.

Signature: _____

8. Glossary, abbreviations

Baud rate:

The speed at which data is transferred via the serial port to the receiver. The number is in bits per seconds.

Decimal/Hexadecimal:

Hexadecimal is a system for representing numbers in base 16, rather than the base 10 we normally use. The hexadecimal system requires 15 digits and a zero; conventionally the letters A-F are used to represent the digits for which the decimal system cannot provide equivalents. Hexadecimal notation is not usually important for the PC user (with the possible exception of specifying base addresses) but is still quite important for the programmer. Its importance arises because there is a very close correspondence between hexadecimal and the very important binary numbering system that computers use internally. However, hexadecimal notation is much more compact than binary.

The reason why you can select both systems in SetEdit is that many satellite operators use "even" hexadecimal PID numbers. For example the audio PID on Astra transponder 11720 are in decimal notation 256, 512, 768, 1024, 1280 etc., whereas in hexadecimal notation they are 100, 200, 300, 400 etc.

DLL:

Dynamic Link Library. A Windows library file that can be shared by multiple applications.

LNB:

Low Noise Block down-converter. Amplifies received signals and converts them from microwave to lower frequency signals which are then sent along a cable to the satellite receiver. An LNB can be either single or double. A double LNB is required when more than one receiver is used allowing the viewing of different satellite channels on other television sets.

PID:

Program Identifier. A 13-bit code in the transport packet header. PID 0 indicates that the packet contains a PAT PID. PID 1 indicates a packet that contains CAT. The PID 8191 (all 1 bits) indicates null (stuffing) packets. All packets belonging to the same elementary data stream have the same PID.

The most important PIDs are the Video PID (for the video information), the Audio PID for the sound and the PCR PID (Program clock reference) to get Video and audio synchronous.

Usually the receiver finds the PIDs automatically, but occasionally (exotic channels) you have to know them and enter them by hand.

FEC:

Forward Error Correction. A system in which redundancy is added to the message so that most errors can be corrected dynamically at the receiver.

Usual values are 1/1, 1/2, 2/3, 3/4, 5/6 and 7/8. 3/4 means that 3 out of 4 bits are reference data and the remaining one is for error correction.

Symbol rate:

The amount of digital data that is transmitted per second via a transponder. This is specified in Msymb/sec (Mega symbols per second), whereby a "Symbol" consists of 4 bits. The symbol rate together with the FEC value can be used to calculate the bandwidth of a transponder.

Polarity:

A satellite transmission signal has either a vertical, horizontal, or circular orientation; a satellite can be all vertical or all horizontal; if a satellite is cross-polarized, it can transmit both ways and therefore has twice the delivery capacity.

Select:

To select a channel please click with the mouse on the channel. To select more than one channel you can use the usual windows methods. When you press the shift key and click on a channel all channels between the currently selected and the last selected channel are selected. If you press the Ctrl key on the keyboard you can add single channels to your selection.

There are some other functions that select channels, e.g. the find function.

You can also enter the channel number with the keyboard or just type in the name of the channel you want to select.

Settings:

Settings are the part of the memory of your receiver where all channel information is stored.

It contains all channel information such as sequence, channel name, frequency, symbol rate, FEC, and all other parameters.